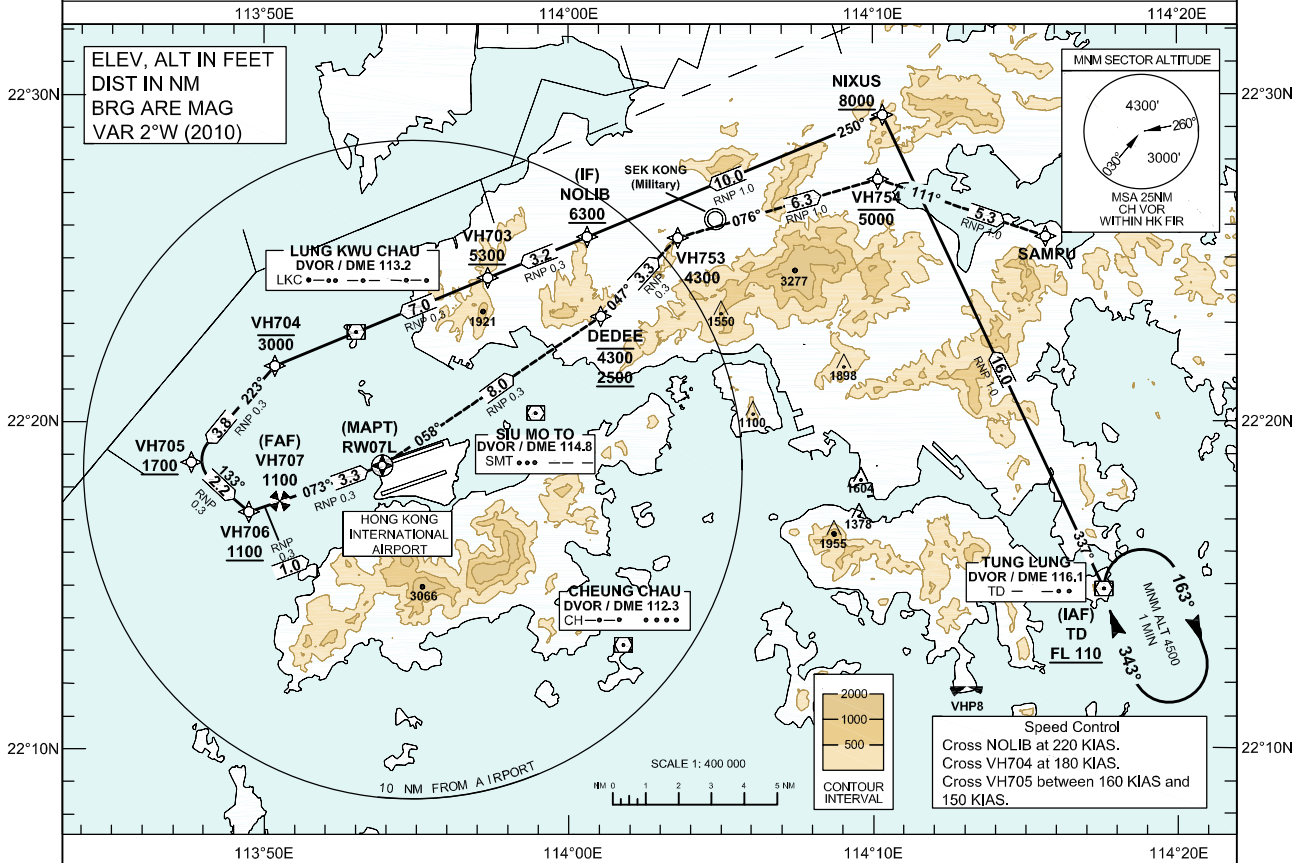


|   |   |   |   |
|---|---|---|---|
| <b>INSTRUMENT APPROACH CHART - ICAO</b> | AERODROME ELEV 28 FT<br>(HEIGHTS RELATED TO THR RWY 07L - ELEV 22 FT)<br>MIN TEMP 0°C | HONG KONG TOWER NORTH 118.2<br>HONG KONG APPROACH 119.1<br>HONG KONG DIRECTOR 119.5 | <b>HONG KONG / Intl (VHHH) RNAV (RNP) y RWY 07L</b> |
|---|---|---|---|

**Authorization from HONG KONG CAD is Required (AIC 14/13 refers)**

- NOTE 1 RNP AR APCH: RNP 0.3 in Intermediate, Final and Missed Approach Segment, RNP 1.0 in Initial Segment. RNP values are depicted on Plan View for each applicable leg.
- NOTE 2 Aircraft must obtain approval from Hong Kong Civil Aviation Department for RNP AR APCH. Carriage of certified GNSS receiver is mandatory.
- NOTE 3 The close proximity of the northern FIR boundary requires strict adherence to the procedure track. Execute a missed approach if unable to comply and expect radar vectors within Hong Kong FIR when above the minimum vector altitude.
- NOTE 4 This is the contingency procedure for RWY07L when bad weather or other unforeseen circumstances blocked the flight path to the South West of the airport.
- NOTE 5 Do not accept radar vectors inside NOLIB.

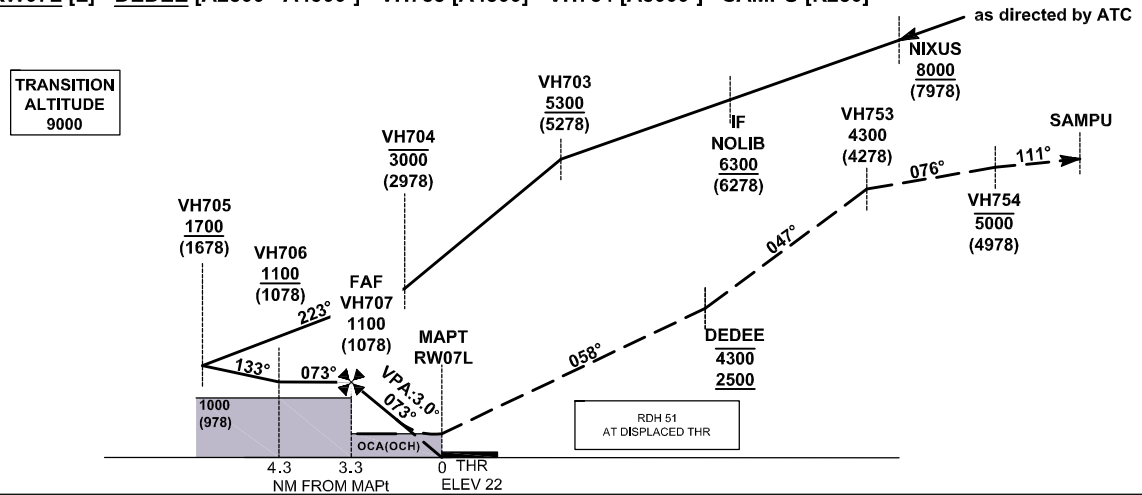


**MISSED APPROACH**

Climb to 5 000 ft. From RW07L track to DEEDE, and cross DEEDE above 2 500 ft and below 4 300 ft. Then to VH753 at 4 300 ft, then to VH754, then to SAMPU.

- NOTE 1 Climb gradient of 5.7% (347ft / NM) until above 4 500 ft is required.
- NOTE 2 Speed restriction of 230 KIAS is required.

**RW07L [L] - DEEDE [A2500+ A4300-] - VH753 [A4300] - VH754 [A5000-] - SAMPU [K230]**



| OCA (OCH) | System | A         | B         | C         | D         |
|-----------|--------|-----------|-----------|-----------|-----------|
| RNP 0.3   | GNSS   | 420 (400) | 420 (400) | 420 (400) | 420 (400) |

| DIST THR (NM)  | 4           | 3           | 2         |
|----------------|-------------|-------------|-----------|
| ALT (HGT) (FT) | 1350 (1328) | 1030 (1008) | 710 (688) |

## FMC Database Coding Reference for RNAV<sub>(RNP)</sub> y RWY07L

| <i>Serial Number</i> | <i>Path Descriptor</i> | <i>Waypoint Identifier</i> | <i>Fly-over</i> | <i>Course/Track (°M)</i> | <i>Magnetic Variation</i> | <i>Distance (NM)</i> | <i>Turn Dir</i> | <i>Altitude (ft)</i> | <i>Speed (KIAS)</i> | <i>VPA (°)</i> | <i>Navigation Specification</i> |
|----------------------|------------------------|----------------------------|-----------------|--------------------------|---------------------------|----------------------|-----------------|----------------------|---------------------|----------------|---------------------------------|
| 01                   | IF                     | TD                         | -               | -                        | +2.0                      | -                    | -               | +FL110               | -                   | -              | RNP AR APCH                     |
| 02                   | TF                     | NIXUS                      | -               | 337                      | +2.0                      | 16.0                 | L               | +8000                | -                   | -              | RNP AR APCH                     |
| 03                   | TF                     | NOLIB                      | -               | 250                      | +2.0                      | 10.0                 | -               | +6300                | 220                 | -              | RNP AR APCH                     |
| 04                   | TF                     | VH703                      | -               | 250                      | +2.0                      | 3.2                  | -               | +5300                | -                   | -              | RNP AR APCH                     |
| 05                   | TF                     | VH704                      | -               | 250                      | +2.0                      | 7.0                  | L               | -3000                | 180                 | -              | RNP AR APCH                     |
| 06                   | TF                     | VH705                      | -               | 223                      | +2.0                      | 3.8                  | L               | +1700                | -160<br>+150        | -              | RNP AR APCH                     |
| 07                   | TF                     | VH706                      | -               | 133                      | +2.0                      | 2.2                  | L               | +1100                | -                   | -              | RNP AR APCH                     |
| 08                   | TF                     | VH707                      | -               | 073                      | +2.0                      | 1.0                  | -               | 1100                 | -                   | -              | RNP AR APCH                     |
| 09                   | TF                     | <b>RW07L</b>               | <b>Y</b>        | 073                      | +2.0                      | 3.3                  | L               | -                    | -                   | -3.0           | RNP AR APCH                     |
| 10                   | TF                     | DEDEE                      | -               | 058                      | +2.0                      | 8.0                  | L               | -4300<br>+2500       | -                   | -              | RNP AR APCH                     |
| 11                   | TF                     | VH753                      | -               | 047                      | +2.0                      | 3.3                  | R               | 4300                 | -                   | -              | RNP AR APCH                     |
| 12                   | TF                     | VH754                      | -               | 076                      | +2.0                      | 6.3                  | R               | -5000                | -                   | -              | RNP AR APCH                     |
| 13                   | TF                     | SAMPU                      | -               | 111                      | +2.0                      | 5.3                  | -               | -                    | 230                 | -              | RNP AR APCH                     |

### Waypoint Coordinates:

| <i>Waypoint Identifier</i> | <i>Coordinates (WGS84)</i> |                       |
|----------------------------|----------------------------|-----------------------|
| TD (IAF)                   | 22 14 52.42 N              | 114 17 35.30 E        |
| NIXUS                      | 22 29 22.05 N              | 114 10 19.70 E        |
| NOLIB (IF)                 | 22 25 38.95 N              | 114 00 36.84 E        |
| VH703                      | 22 24 23.82 N              | 113 57 20.92 E        |
| VH704                      | 22 21 42.46 N              | 113 50 21.18 E        |
| VH705                      | 22 18 45.56 N              | 113 47 36.69 E        |
| VH706                      | 22 17 14.50 N              | 113 49 29.82 E        |
| VH707 (FAF)                | 22 17 34.23 N              | 113 50 30.94 E        |
| <b>RW07L (MAPT)</b>        | <b>22 18 39.30 N</b>       | <b>113 53 52.68 E</b> |
| DEDEE                      | 22 23 12.70 N              | 114 01 03.67 E        |
| VH753                      | 22 25 36.92 N              | 114 03 36.03 E        |
| VH754                      | 22 27 24.31 N              | 114 10 10.70 E        |
| SAMPU                      | 22 25 39.19 N              | 114 15 40.91 E        |