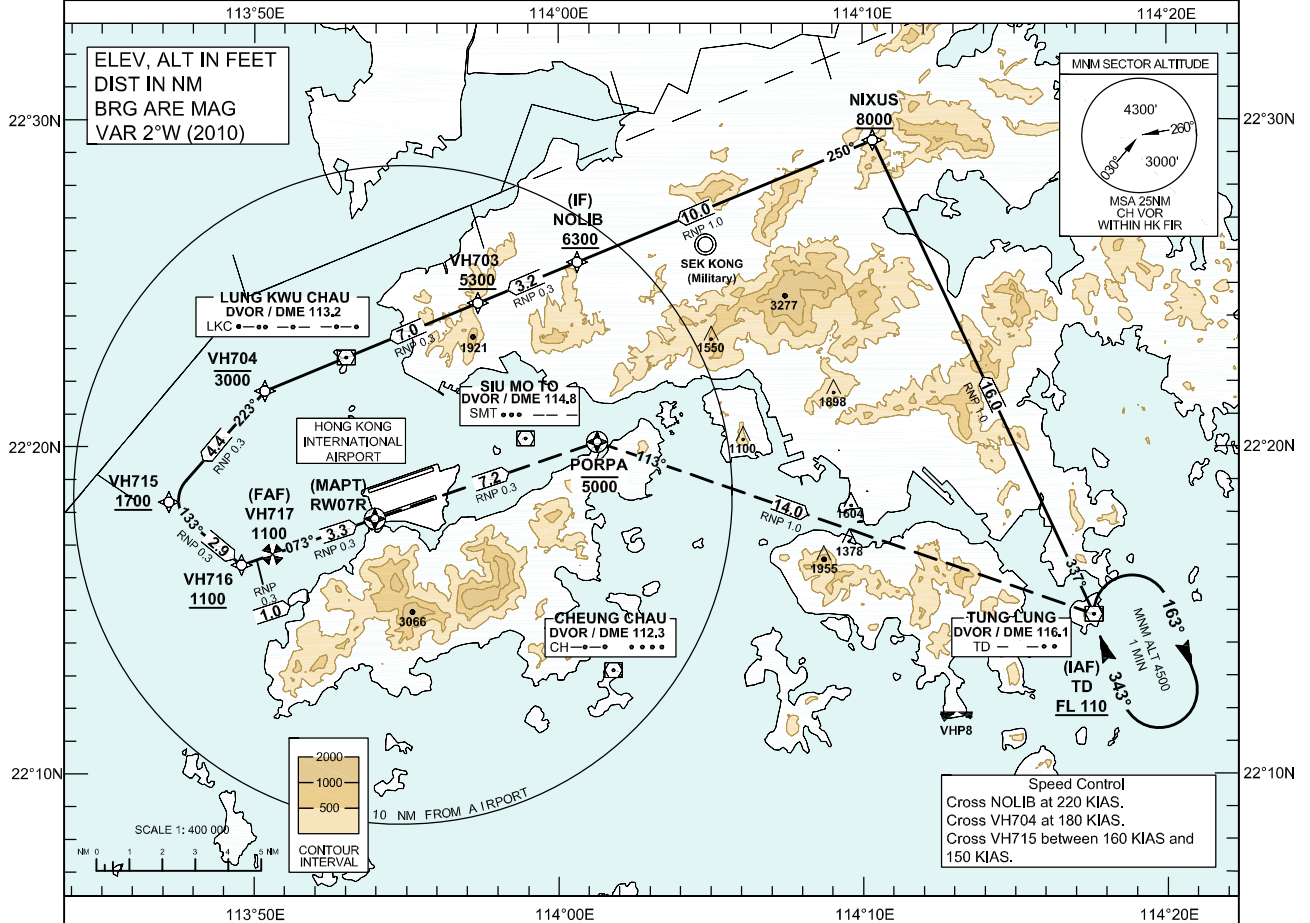


<b>INSTRUMENT APPROACH CHART - ICAO</b>	AERODROME ELEV 28 FT (HEIGHTS RELATED TO THR RWY 07R - ELEV 27 FT) MIN TEMP 0°C	HONG KONG TOWER SOUTH 118.4 HONG KONG APPROACH 119.1 HONG KONG DIRECTOR 119.5	<b>HONG KONG / Intl (VHHH) RNAV (RNP) y RWY 07R</b>
---	---	---	---

**Authorization from HONG KONG CAD is Required (AIC 14/13 refers)**

- NOTE 1 RNP AR APCH: RNP 0.3 in Intermediate, Final and Missed Approach Segment, RNP 1.0 in Initial Segment. RNP values are depicted on Plan View for each applicable leg.
- NOTE 2 Aircraft must obtain approval from Hong Kong Civil Aviation Department for RNP AR APCH. Carriage of certified GNSS receiver is mandatory.
- NOTE 3 The close proximity of the northern FIR boundary requires strict adherence to the procedure track. Execute a missed approach if unable to comply and expect radar vectors within Hong Kong FIR when above the minimum vector altitude.
- NOTE 4 This is the contingency procedure for RWY07R when bad weather or other unforeseen circumstances blocked the flight path to the South West of the airport.
- NOTE 5 Do not accept radar vectors inside NOLIB.

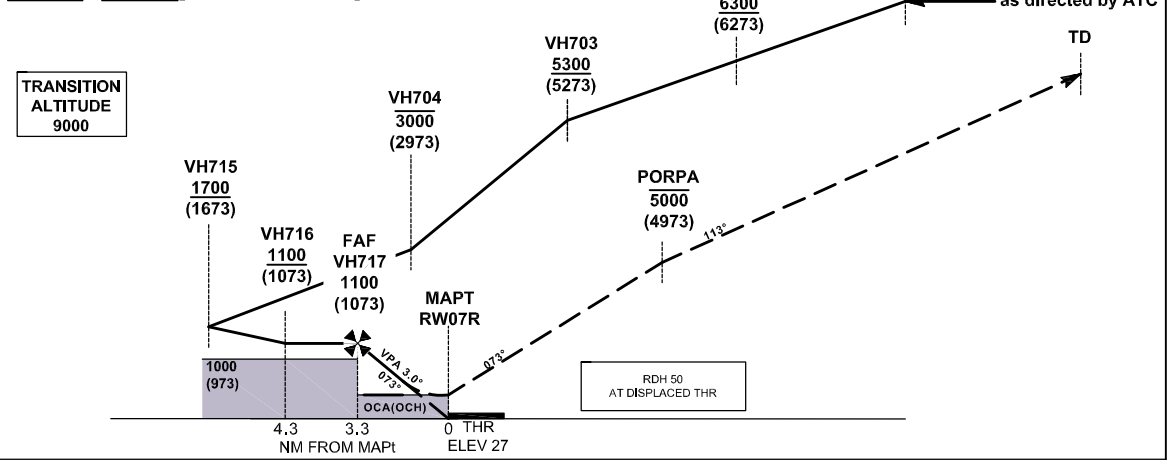


**MISSSED APPROACH**

Climb to 5 000 ft, track to PORPA, then to TD, or as directed by ATC.

- NOTE 1 Climb gradient of 2.5% is required. (152 ft / NM)  
NOTE 2 Speed restriction of 220 KIAS is required until TD.

**RW07R - PORPA[R; A5000- ; K220] - TD**



OCA (OCH)	System	A	B	C	D
RNP 0.3	GNSS	430 (410)	430 (410)	430 (410)	430 (410)

DIST THR (NM)	2	3	4	5
ALT (HGT) (FT)	710 (683)	1030 (1003)	1350 (1323)	1670 (1643)

## FMC Database Coding Reference for RNAV<sub>(RNP)</sub> y RWY07R

<i>Serial Number</i>	<i>Path Descriptor</i>	<i>Waypoint Identifier</i>	<i>Fly-over</i>	<i>Course/Track (°M)</i>	<i>Magnetic Variation</i>	<i>Distance (NM)</i>	<i>Turn Dir</i>	<i>Altitude (ft)</i>	<i>Speed (KIAS)</i>	<i>VPA (°)</i>	<i>Navigation Specification</i>
01	IF	TD	-	-	+2.0	-	-	+FL110	-	-	RNP AR APCH
02	TF	NIXUS	-	337	+2.0	16.0	L	+8000	-	-	RNP AR APCH
03	TF	NOLIB	-	250	+2.0	10.0	-	+6300	220	-	RNP AR APCH
04	TF	VH703	-	250	+2.0	3.2	-	+5300	-	-	RNP AR APCH
05	TF	VH704	-	250	+2.0	7.0	L	-3000	180	-	RNP AR APCH
06	TF	VH715	-	223	+2.0	4.4	L	+1700	-160 +150	-	RNP AR APCH
07	TF	VH716	-	133	+2.0	2.9	L	+1100	-	-	RNP AR APCH
08	TF	VH717	-	073	+2.0	1.0	-	1100	-	-	RNP AR APCH
09	TF	<b>RW07R</b>	<b>Y</b>	073	+2.0	3.3	-	-	-	-3.0	RNP AR APCH
10	TF	<b>PORPA</b>	<b>Y</b>	073	+2.0	7.2	R	- 5000	-	-	RNP AR APCH
11	TF	TD	-	113	+2.0	14.0	-	-	220	-	RNP AR APCH

### Waypoint Coordinates:

<i>Waypoint Identifier</i>	<i>Coordinates (WGS84)</i>	
TD (IAF)	22 14 52.42 N	114 17 35.30 E
NIXUS	22 29 22.05 N	114 10 19.70 E
NOLIB (IF)	22 25 38.95 N	114 00 36.84 E
VH703	22 24 23.82 N	113 57 20.92 E
VH704	22 21 42.46 N	113 50 21.18 E
VH715	22 18 18.69 N	113 47 11.73 E
VH716	22 16 23.23 N	113 49 35.17 E
VH717 (FAF)	22 16 42.96 N	113 50 36.28 E
<b>RW07R (MAPT)</b>	<b>22 17 48.03 N</b>	<b>113 53 58.00 E</b>
<b>PORPA</b>	<b>22 20 09.10 N</b>	<b>114 01 16.30 E</b>