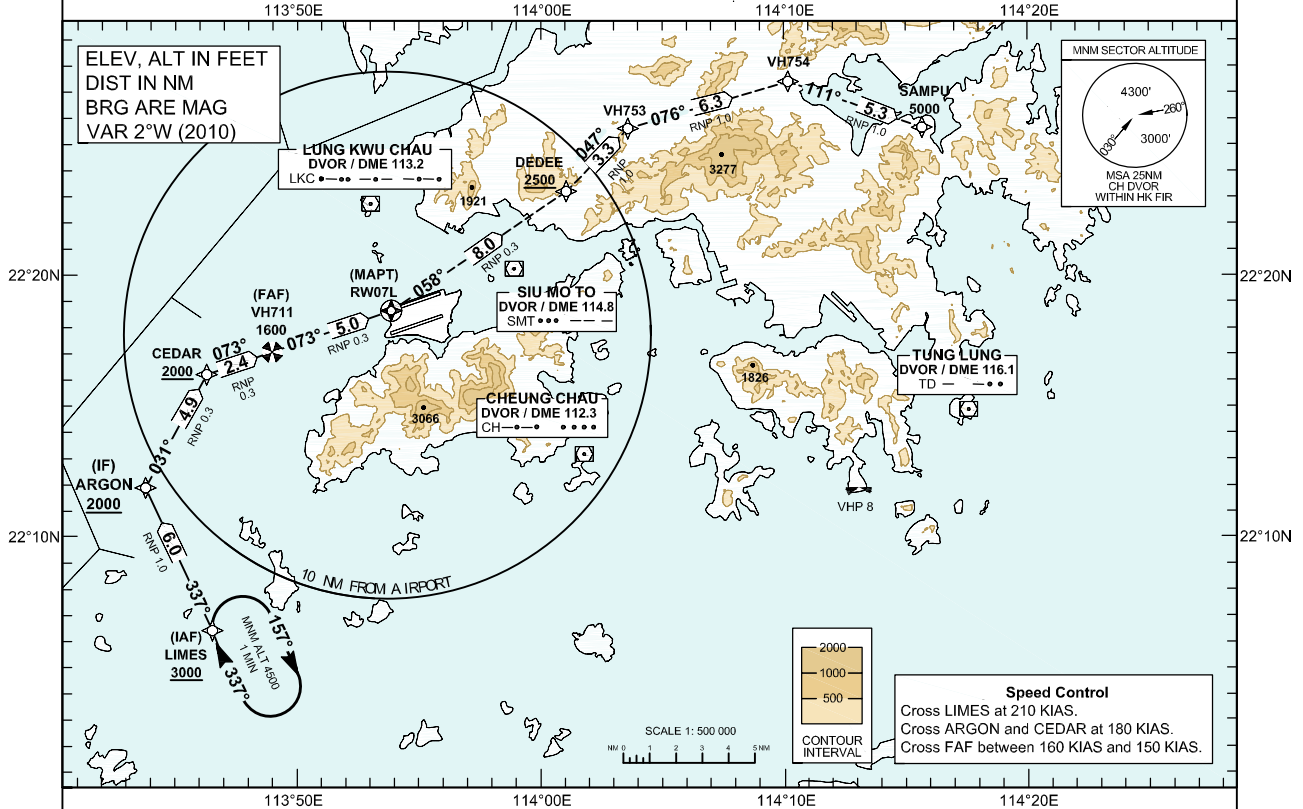


INSTRUMENT APPROACH CHART - ICAO	AERODROME ELEV 28 FT (HEIGHTS RELATED TO THR RWY 07L - ELEV 22 FT) MIN TEMP 0°C	HONG KONG TOWER NORTH 118.2 HONG KONG APPROACH 119.1 HONG KONG DIRECTOR 119.5	HONG KONG / Intl (VHHH) RNAV(RNP)z RWY07L
---	---	---	--

Authorization from HONG KONG CAD IS Required (AIC 14/13 refers)

- NOTE 1 RNP AR APCH: RNP 0.3 in Intermediate, Final and Missed Approach Segment, RNP 1.0 in Initial Segment. RNP values are depicted on Plan View for each applicable leg.
- NOTE 2 Aircraft must obtain approval from Hong Kong Civil Aviation Department for RNP AR APCH. Carriage of certified GNSS receiver is mandatory.
- NOTE 3 Do not accept radar vectors inside VH711.



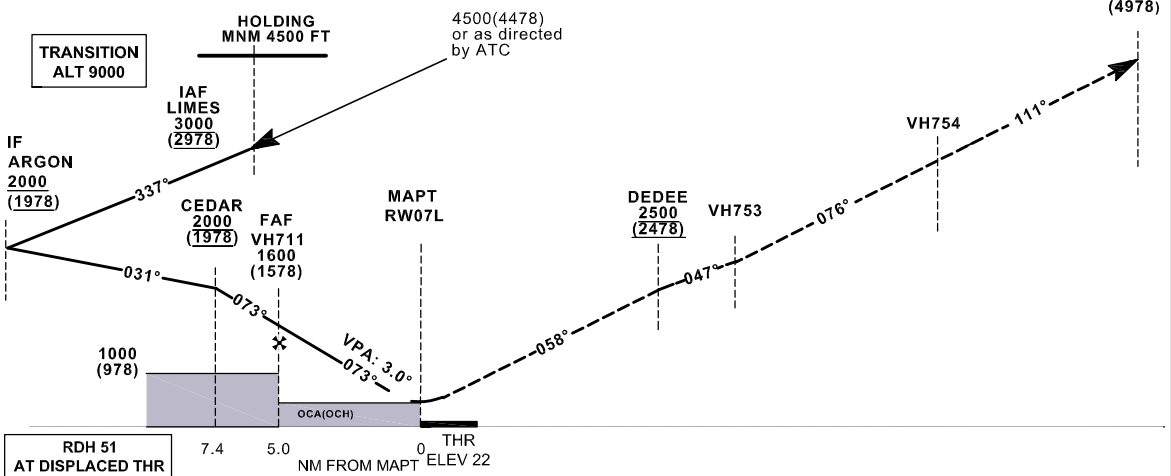
MISSSED APPROACH

Climb to 5 000 ft. From **RW07L** track to DEEDEE, and cross DEEDEE at or above 2 500 ft. Then to VH753, then to VH754, then to SAMPU.

NOTE 1 Climb gradient of 5.7% (347ft / NM) until above 4 500 ft is required.

NOTE 2 Speed restriction of 230 KIAS is required.

RW07L [L] - DEEDEE [A2500+] - VH753 - VH754 - SAMPU [A5000]



OCA (OCH)	System	A	B	C	D
RNP 0.3	GNSS	420 (400)	420 (400)	420 (400)	420 (400)

DIST THR (NM)	4	3	2
ALT (HGT) (FT)	1350 (1328)	1030 (1008)	710 (688)

FMC Database Coding Reference for RNAV_(RNP) z RWY07L

<i>Serial Number</i>	<i>Path Descriptor</i>	<i>Waypoint Identifier</i>	<i>Fly-over</i>	<i>Course/Track (°M)</i>	<i>Magnetic Variation</i>	<i>Distance (NM)</i>	<i>Turn Dir</i>	<i>Altitude (ft)</i>	<i>Speed (KIAS)</i>	<i>VPA (°)</i>	<i>Navigation Specification</i>
01	IF	LIMES	-	-	+2.0	-	-	+3000	210	-	RNP AR APCH
02	TF	ARGON	-	337	+2.0	6.0	-	+2000	180	-	RNP AR APCH
03	TF	CEDAR	-	031	+2.0	4.9	-	+2000	180	-	RNP AR APCH
04	TF	VH711	-	073	+2.0	2.4	-	1600	-160 +150	-3.0	RNP AR APCH
05	TF	RW07L	Y	073	+2.0	5.0	L	-	-	-	RNP AR APCH
06	TF	DEDEE	-	058	+2.0	8.0	-	+2500	230	-	RNP AR APCH
07	TF	VH753	-	047	+2.0	3.3	-	-	230	-	RNP AR APCH
08	TF	VH754	-	076	+2.0	6.3	-	-	230	-	RNP AR APCH
09	TF	SAMPU	-	111	+2.0	5.3	-	5000	230	-	RNP AR APCH

Waypoint Coordinates:

<i>Waypoint Identifier</i>	<i>Coordinates (WGS84)</i>	
LIMES (IAF)	22 06 25.60 N	113 46 32.60 E
ARGON (IF)	22 11 52.56 N	113 43 47.67 E
CEDAR	22 16 12.55 N	113 46 18.12 E
VH711 (FAF)	22 17 04.63 N	113 48 59.26 E
RW07L (MAPT)	22 18 39.30 N	113 53 52.68 E
DEDEE	22 23 12.70 N	114 01 03.67 E
VH753	22 25 36.92 N	114 03 36.03 E
VH754	22 27 24.31 N	114 10 10.70 E
SAMPU	22 25 39.19 N	114 15 40.91 E